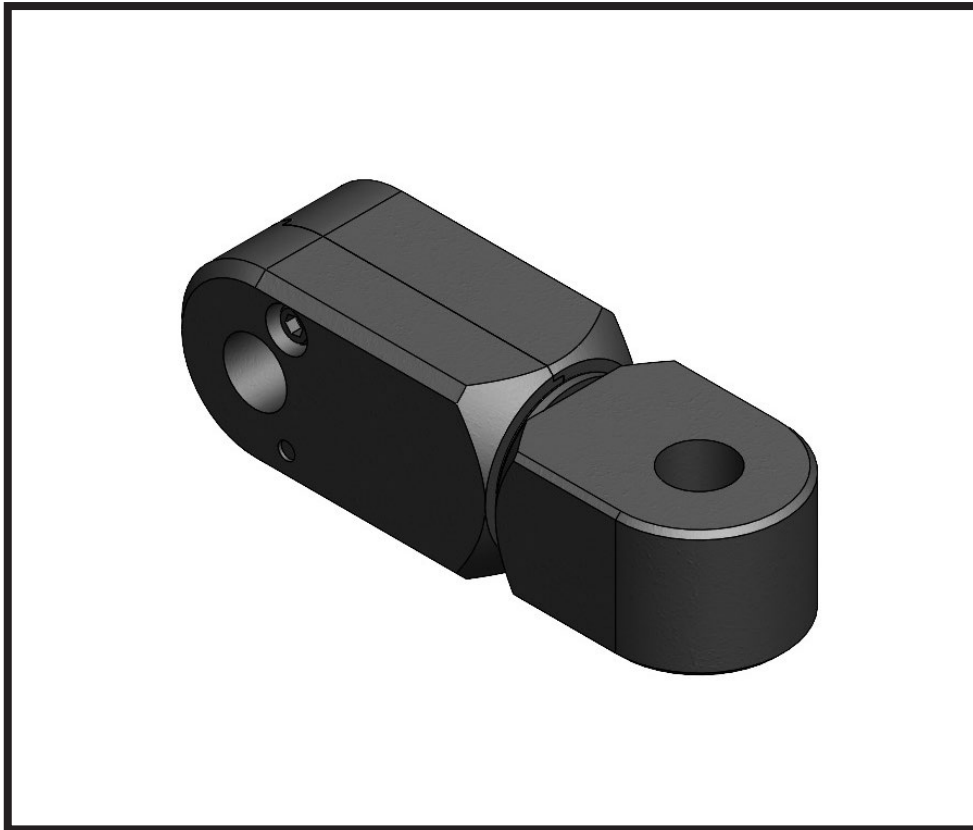




BX88461

Swivel Assembly Kit for BX7420/BX4370 Installation Instructions



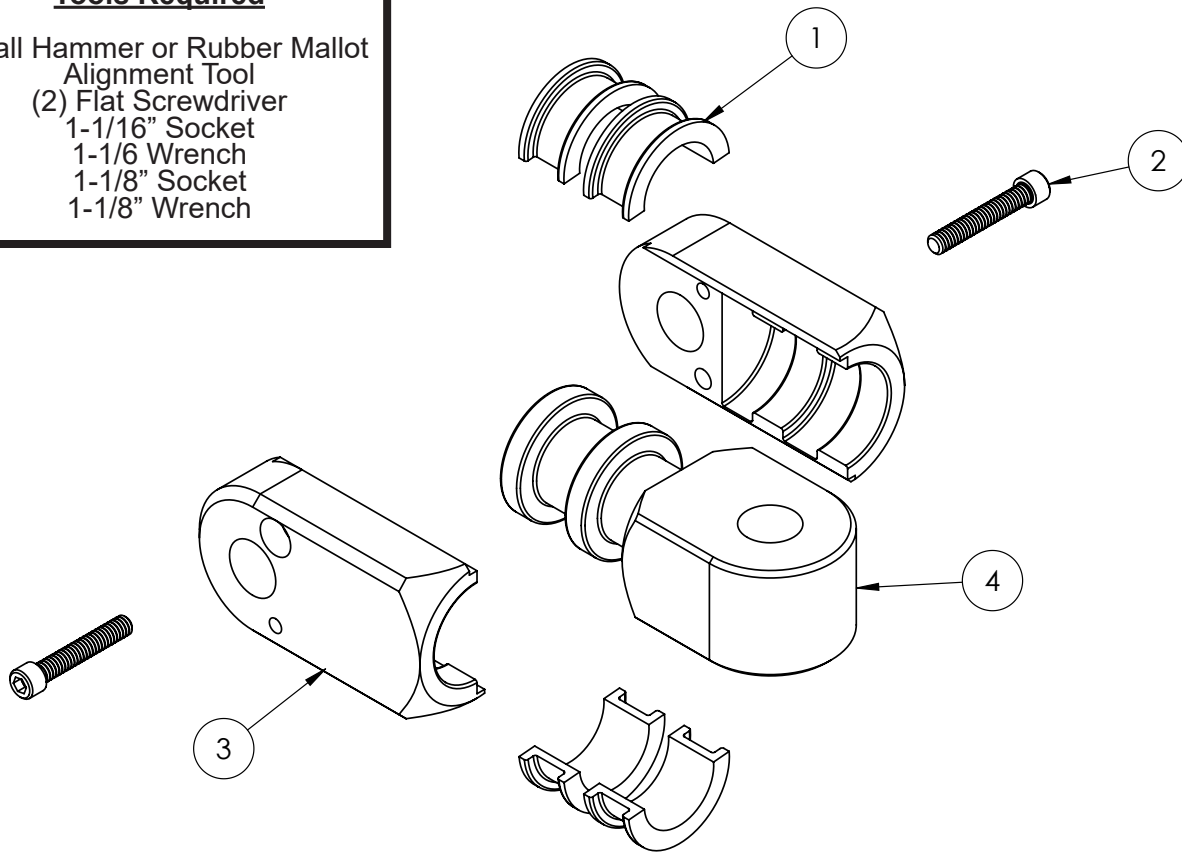
Please read these Installation Instructions in their entirety prior to installing or operating this equipment.

BX88461

Swivel Assembly Kit for BX7420/BX4370 Installation Instructions

Tools Required

Small Hammer or Rubber Mallet
Alignment Tool
(2) Flat Screwdriver
1-1/16" Socket
1-1/6 Wrench
1-1/8" Socket
1-1/8" Wrench



Item No.	Part No.	Description	Qty.
1.....	190-0179.....	Split Bushing.....	4
2.....	201-0953.....	1/4"-20 x 1-1/2" Socket Head Cap Screw, ZP.....	2
3.....	299-0737.....	Pivot Block.....	2
4.....	299-0738.....	Pivot Shaft.....	1

Important:

Use only genuine factory replacement parts on your baseplate. Do **NOT** substitute homemade or non-typical parts. If a bolt is lost or in need of replacement, for your safety and the preservation of your baseplate, be sure to use a replacement bolt of the same grade (In most cases it will be Grade 5, please reference the parts list above). Replacement parts may be ordered through your nearest Blue Ox® Dealer or Distributor. Failing to follow and/or altering these installation instructions in either installation or required equipment will void the manufacturer's warranty. Towing behind a non-motorized vehicle will void the warranty.

BX88461

Swivel Assembly Kit for BX7420/BX4370 Installation Instructions

**** Before starting, note the placement of the washers as they will need to be reinstalled with the new swivel block. ****

Replacing Swivel Assembly



1. Place tow bar in a stored position. Using a 1-1/8" socket and wrench, remove the one (1) 3/4" nut attaching the tow bar legs.



2. Rotate tow bar out of stowed position. Remove the 3/4" x 3-1/2" bolt. Remove tow bar legs and set aside to be reinstalled later.



3. Using a 1-1/8" socket and wrench, remove the one (1) bolt attaching the pivot block to the receiver. Remove bolt and washer, set aside to be reinstalled. Discard old pivot block.



4. Place two (2) of the existing washers onto one side of the pivot block.

BX88461

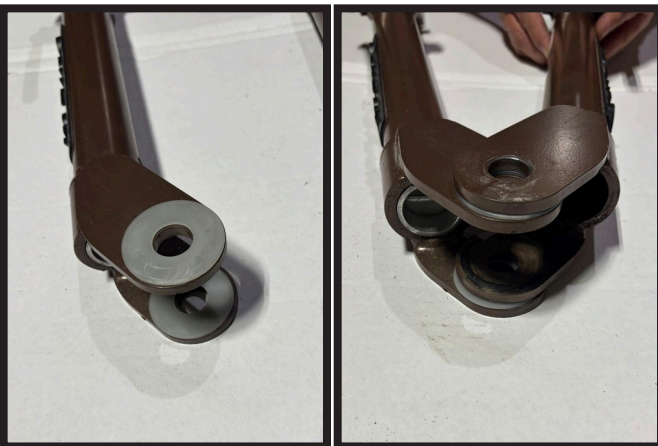
Swivel Assembly Kit for BX7420/BX4370 Installation Instructions



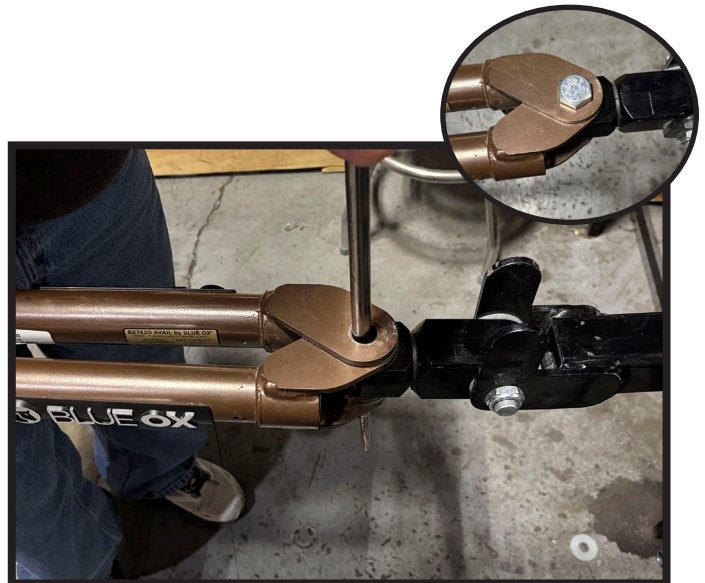
5. Line up the new pivot block with the existing washers and holes in the hitch connector. Start the 3/4" x 3-1/4" bolt. Then insert the other two (2) existing washers on the other side of the pivot block. Fully install bolt with nut and tighten.



6. Place a washer onto the swivel of the pivot block.



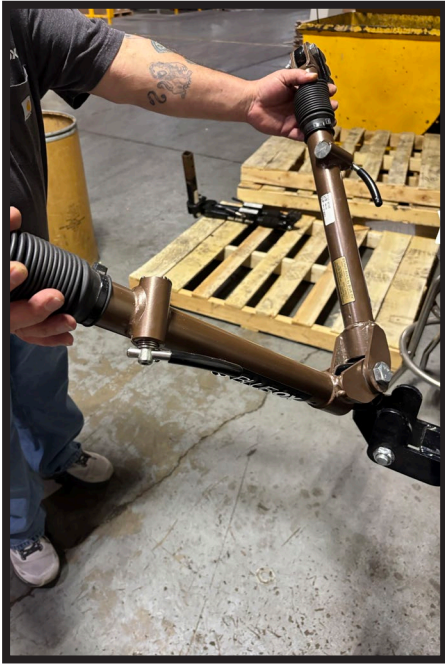
7. Maneuver the driver side leg over the passenger side leg and slide it into the pivot block.



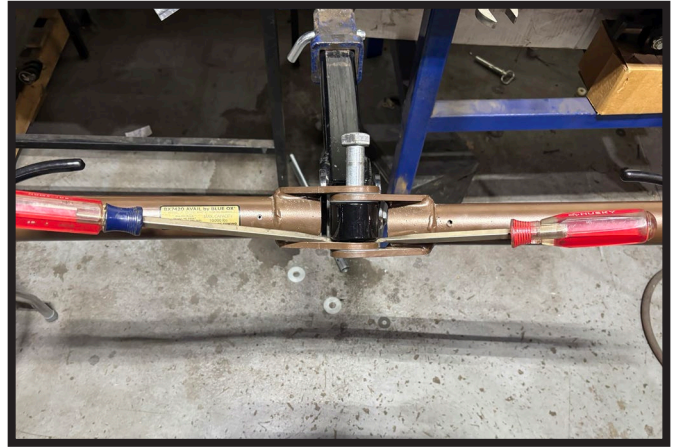
8. Using the alignment tool, align all of the holes on the tow bar. Insert 3/4" x 3-1/2" bolt through aligned holes (inset).

BX88461

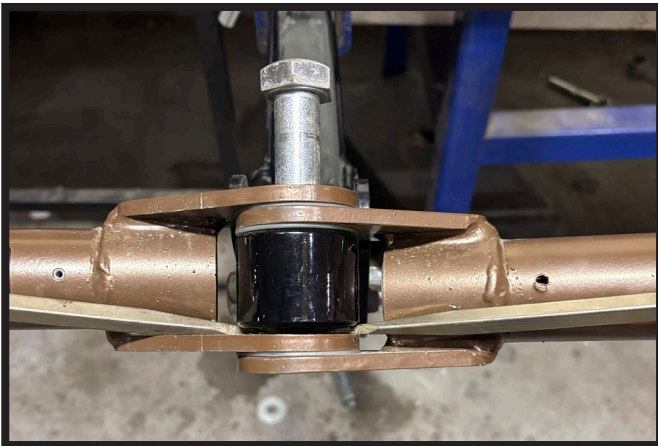
Swivel Assembly Kit for BX7420/BX4370 Installation Instructions



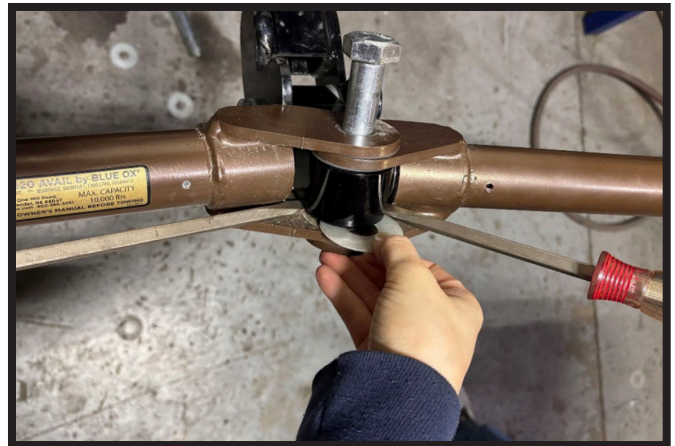
9. Raise the tow bar legs up a few inches so that they can be spread apart.



10. Insert the flat screwdrivers into the space that does not contain a washer. Tap on the end of the screwdrivers with rubber mallet to create a gap for the washers to be inserted.



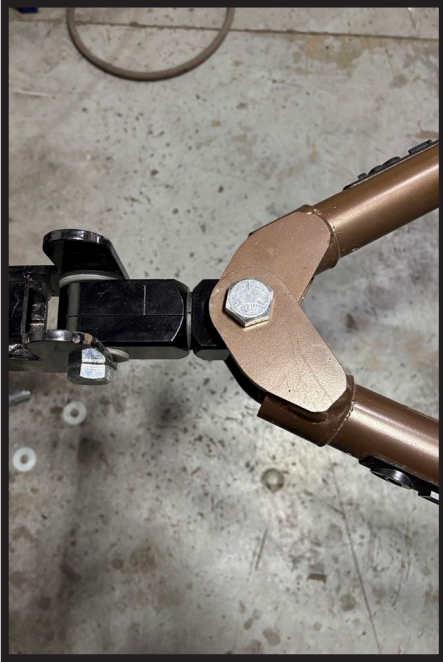
11. Using a rubber mallet, tap end of bolt up far enough to insert the washer.



12. Insert washer.
Note: The screwdrivers may need to be removed to position washer all the way in place.

BX88461

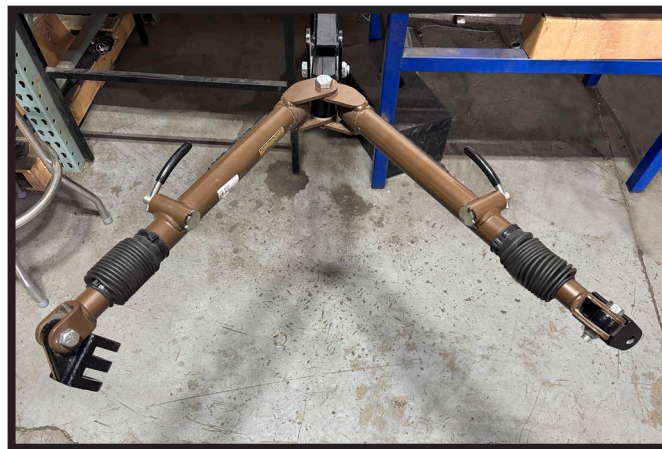
Swivel Assembly Kit for BX7420/BX4370 Installation Instructions



13. Bring tow bar legs back to a horizontal position and remove bolt. Use alignment tool to ensure all holes are aligned.



14. Insert 3/4" x 3-1/2" bolt with nut and tighten.



15. Once all the bolts have been fully tightened the tow bar should be able to sit vertically with legs extended as shown.

BX88461
Swivel Assembly Kit for BX7420/BX4370
Installation Instructions

CUSTOMER SERVICE COMMITMENT

Blue Ox® is committed to providing you with exceptional customer care throughout your lifetime with our products. Our team is here to assist you with any questions you may have regarding the performance of your product. Simply call (402) 385-3051 and you can speak with our technical service team.

Additionally, please visit our website to see which rallies our Destination America team will be attending. For a nominal fee, our service technician will service your towing system to ensure it's in proper working condition. Also, as a commitment to our customers, should you visit our factory, you can stay at our full service Blue Ox® campground at no charge along with enjoying a factory tour.

Again, thank you for being our customer and for the confidence you have shown in the performance of our products. It is because of customers like you we enjoy the success we have today.



© 2024 Blue Ox
One Mill Road, Industrial Park
Pender, Nebraska 68047
Phone: (402) 385-3051
Fax: (402) 385-3360
www.blueox.com