

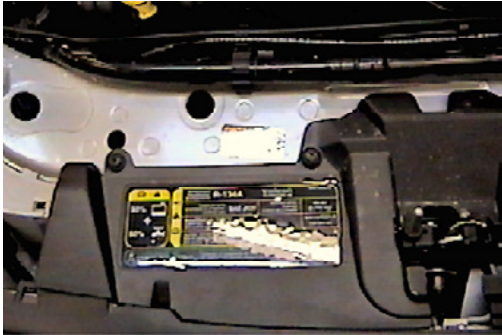


Strong As An Ox™

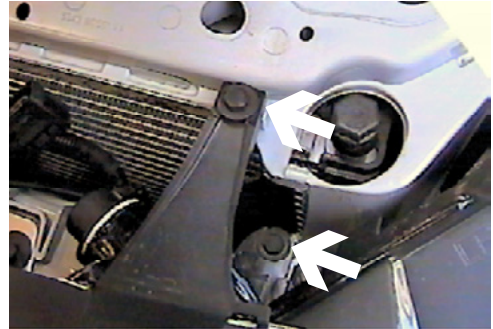
BX2173 Installation Instructions 2000-04 Ford Focus (including the 2.3L engine) 2003 Ford Focus SVT

Serial No.

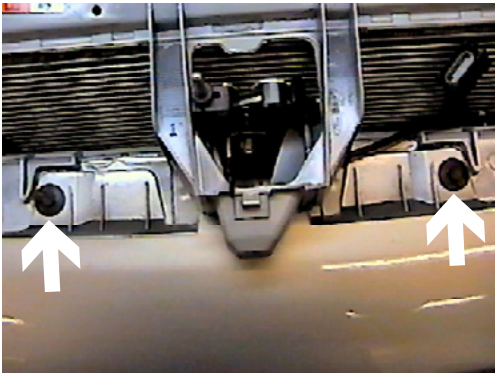
The front fascia, coolant line bracket and anti-pollution devices are removed for baseplate installation. Drilling is required. Trimming of lower air dam is required. The BX8869 is available for the vehicle. Attachment Tabs are 24 inches center to center and a height of 13 3/4 inches depending upon models.



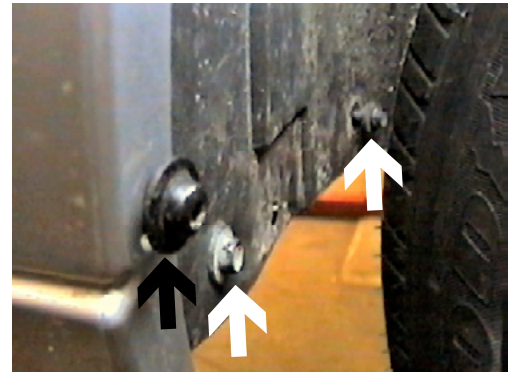
1. Remove the three phillips head push pins from black plastic cover on top side of fascia, lift cover and set aside.



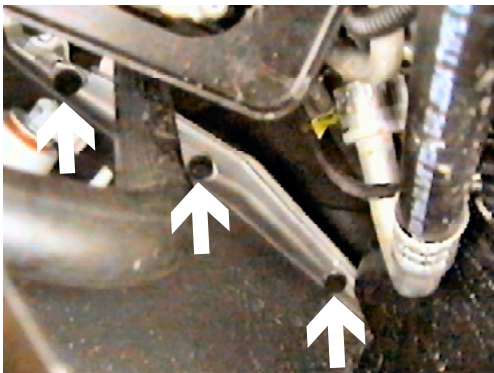
2. Remove two metric bolts from upper grill with the 10MM socket, both sides, pull forward, unplug electrical and set aside.



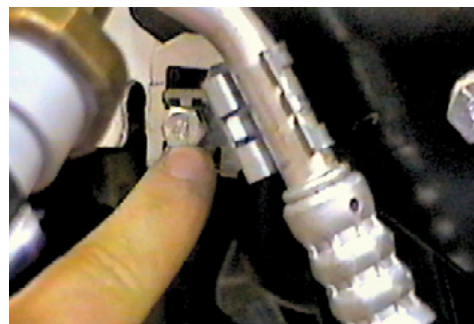
3. Remove two push pins from the top side of fascia just below upper grill.



4. **All Models:** Just forward of front tire is one torx screw to remove with the 27 Torx, both sides (black arrow).
2.3L Models Only: Remove two hex head screws with the 10MM socket from the driver's side (white arrow).



5. Remove the three metric bolts just forward of the front tire, on the inside of fascia, using the 10MM socket, both sides. Pull fascia forward and set aside.



6. **For all models, except 2.3L engine.** Remove one metric bolt from coolant line bracket on the passenger's side.

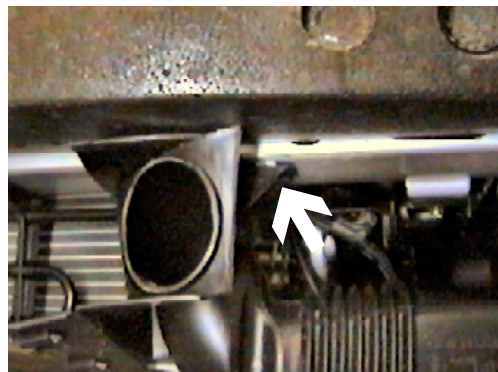


Strong As An Ox™

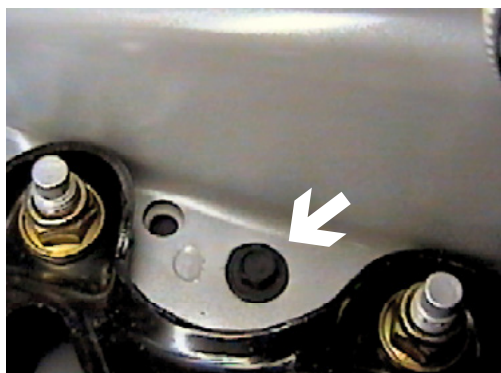
Steps 7-12 Are For 2.3L Engine Models Only.



7. Remove two metric bolts from anti-pollution device from lower frame rib on passenger's side, lift unit up to release from upper frame rib, pull unit out of the way and tie in place.



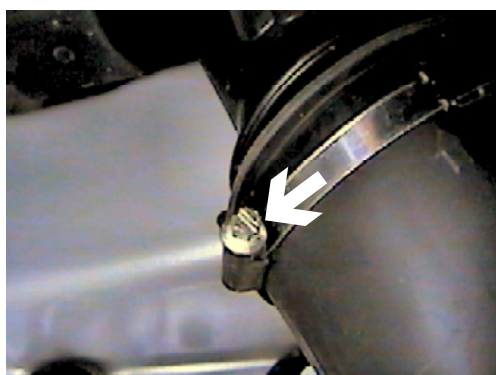
8. Remove one metric bolt from air vent on the bottom of metal bumper using the 10MM socket and pull air vent tube from plastic box. **Air vent tube will not be reinstalled.**



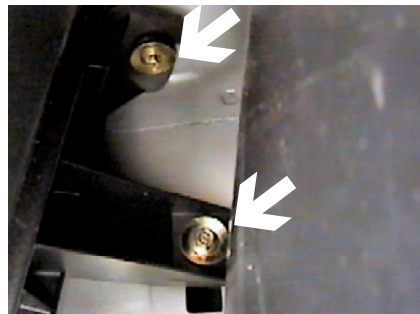
9. Remove one metric bolt from lower frame rib between tie down bracket bolts on the driver's side on the air box.



10. Remove metric bolt from lower frame rib just forward of bolt location in step 9, pull air box away from frame and set aside.



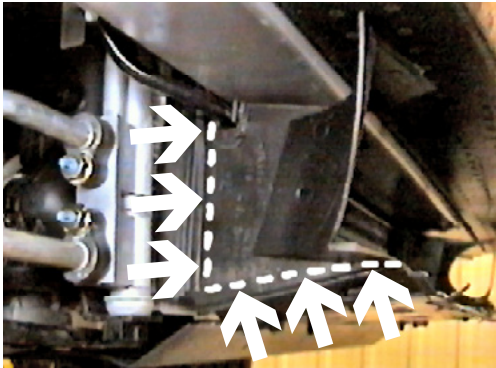
11. Loosen hose clamp from air baffle tube on driver's side just inside tie down bracket (as shown in step 9) with the flat screw driver.



12. Just forward of wheel well on driver's side are two metric bolts to remove and one metric bolt toward the front side of air baffle, with the 8MM socket. Pull air baffle down to release hose clamp and set aside.

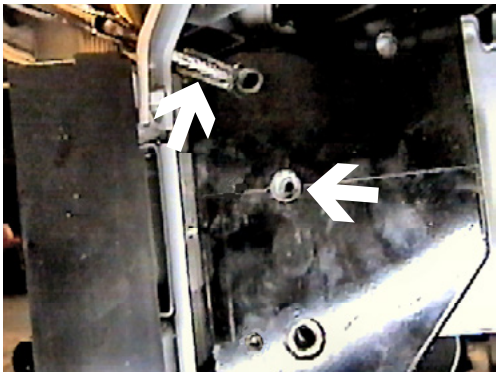


Strong As An Ox™



13. All Models:

Using the utility knife to cut and remove a portion of the air dam just below metal bumper as shown in photo, both sides. **Option:** Some models may allow the removal of the ends on the air dam.



2.3L Model Shown



All Models



14. Remove four push pins from the lower edge of air dam and set aside.

15. Slide baseplate ends up from underneath frame and over the outside of the frame rails as shown in photo.

2.3L Model: Align the middle hole on driver's side with existing forward mount hole for air baffle, lift baseplate spacer plates (see drawing on last page) to the bottom of metal bumper, clamp upper baseplate to upper frame ribbing with the vise grip, both sides and clamp baseplate to the bottom of metal bumper with the large vise grips.

All Other Models: Align baseplate to the bottom of metal bumper, equally space upper and lower holes on baseplate ends with the ribbing on frame rails, both side.

All Models: Using the baseplate as a template, drill the two upper holes and one lower hole on the end plates into frame ribbing, using the 13/32" drill bit, both sides. Insert 3/8" hex bolts into drilled holes from the rib side, tighten the lock washer and hex nut with the 9/16" socket. **Be sure and use loctite on all bolts before tightening. Tighten all bolts according to the Torque Chart in the General Instruction sheet.**

16. All Models:

Using the baseplate as a template drill the two holes into the bottom of the metal bumper with the 13/32" drill bit. Insert the 3/8" nut plate into the end of the metal bumper to align with drilled holes, tighten the lock washer and hex bolt as shown in the drawing on the last page. **NOTE:** Some models may have the ends of metal bumper capped. Remove with the flat screw driver. **Be sure and use loctite on all bolts before tightening. Tighten all bolts according to the Torque Chart in the General Instruction sheet.**

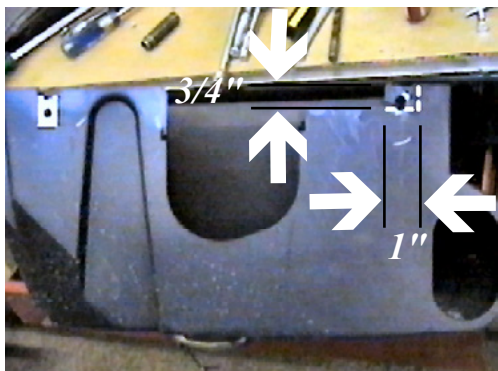


Strong As An Ox™

Steps 17 - 20 are for 2.3L Models Only.



17. Reinstall the anti-pollution device on the passenger's side using the 6MM x 30MM hex bolts and the 14 1/4" flat washers as shown in the drawing on the last page. Note the clips on the top of anti-pollution device will not snap onto the frame. **Do not over tighten these bolts and be sure to use loctite.**



19. Using the utility knife, cut out the forward top bolt location on the air box, 3/4" x 1" as shown in photo.



18. Remove rubber grommet from front bolt on air baffle. **Rubber grommet will not be reinstalled.** Reinstall air baffle with original equipment. (See photo in step 15 for front bolt location on driver's side)



20. Reinstall air box using original equipment, except the forward bolt will need to use the self tapping screw. Align with small hole in baseplate, tap through air box and into lower frame.



Strong As An Ox™



21. Hold fascia to align with its original position, mark and trim lower grill opening to allow attachment tabs to come through. Reinstall fascia, lower air dam, upper grill and top grill cover. **Be sure all electrical components are plugged in properly.**
22. The dimensional variations between otherwise identical cars can be considerable. While the location and size of the holes in the baseplate were designed to allow for easy installation, it may be necessary to file a hole slightly to allow a bolt to clear.
23. Install the tow bar and safety cables according to the instructions included in their packages.
24. Do **not** substitute other devices if the tow bar pin and clip are lost.
25. **DEALER OR INSTALLER: BE CERTAIN THE USER RECEIVES THE INSTRUCTION SHEET.**

Tools Required

| | | |
|-----------------------|---------------|------------------|
| 7MM Socket | 10MM Socket | 11MM Socket |
| 13MM Socket | Loctite | 13/32" Drill Bit |
| Phillips Screw Driver | Vise Grips | 9/16" Socket |
| Pry Bar | Utility Knife | |

IMPORTANT: Use only genuine factory replacement parts on your Base Plate. Do not substitute homemade or nontypical parts. If a bolt is lost or in need of replacement, for your safety and the preservation of your Base Plate, be sure to use a replacement bolt of the same grade (Usually Grade 5, refer to parts list). Repair parts may be ordered through your nearest **Blue Ox** dealer or distributor.



Strong As An Ox™

Parts List

| Ref. No. | Qty. | Part No. | Description |
|----------|------|----------|--|
| 1 | 1 | 61-5998 | Weldment, Base Plate, BX2173 |
| 2 | 2 | 61-5420 | Weldment, 3/8" Nut Plate, with Wire |
| 3 | 2 | 201-0021 | 3/8-16 x 3 1/2 Hex Bolt, Grd. 5, ZP |
| 4 | 6 | 201-0368 | 3/8-16 x 1 1/4 Hex Bolt, Grd. 5, ZP |
| 5 | 8 | 203-0010 | 3/8 Lock Washer, ZP |
| 6 | 6 | 202-0003 | 3/8-16 Hex Nut, ZP |
| 7 | 1 | 201-0204 | 1/4-20 x 1 1/4 Hex Bolt, Grd. 5, ZP |
| 8 | 15 | 203-0001 | 1/4 Flat Washer, ZP |
| 9 | 1 | 202-0069 | 1/4-20 Hex Nut, ZP |
| 10 | 2 | 201-0655 | 6MM-1 x 30MM Hex Bolt, Grd. 8.8, ZP |
| 11 | 2 | 201-0553 | 1/4-20 x 1/2 Hx. Wshd, Type F Screw |
| 12 | 2 | 201-0192 | #10-32 x 1/2 Slot, Rd. Hd. Screw |
| 13 | 2 | 203-0054 | #10 Lock Washer |
| 14 | 2 | 202-0047 | #10-32 Hex Nut |
| 15 | 2 | 101-5822 | Adapter, 4 Way Connector |
| 16 | 1 | 201-0654 | #10-16 X 1 Self Drilling Screw |
| E | 1 | | Existing Forward Bolt for Air Box on Driver's Side |
| | 2 | 226-0046 | Baseplate Safety Cable, 36" CL III (Not Shown) |
| | 4 | 229-0359 | Quicklink, 3/8, ZP (Not Shown) |

