



Strong As An Ox™

BX2164 Installation Instructions 1992-'96 Ford F-150

Serial No.

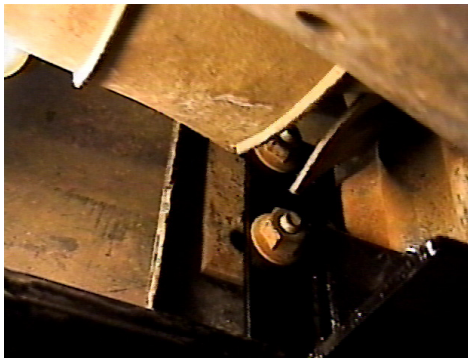
No drilling required. The BX8869 is available for the vehicle. Attachment Tabs are 24 inches center to center and a height of 19 inches.



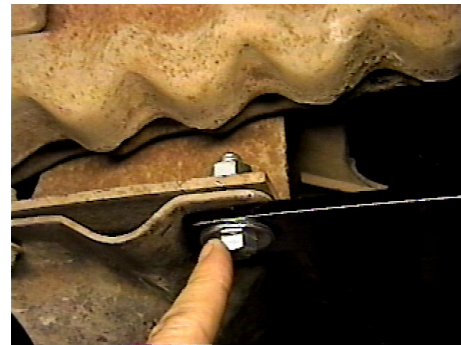
1. Remove forward metric bolt from cross member, on the bottom of frame, with the 13MM socket and remove nut clip from cross member, both sides.



2. While holding bumper in place, remove two metric nuts from the back side of bumper, using the 21MM socket, both sides.



3. Align item 1 with the existing bolts on the back side of the metal bumper and snug existing nuts in place. **Be sure and use loctite on all bolts before tightening. Tighten all bolts according to torque chart in the General Instruction Sheet.**



4. Install items 2, 3, 4 and 5, both sides, according to drawing on last page. Return metal bumper to its original position and tighten all bolts. **Be sure and use loctite on all bolts before tightening. Tighten all bolts according to torque chart in the General Instruction Sheet.**

5. The dimensional variations between otherwise identical cars can be considerable. While the location and size of the holes in the baseplate were designed to allow for easy installation, it may be necessary to file a hole slightly to allow a bolt to clear.
6. Install the tow bar and safety cables according to the instructions included in their packages.
7. Do **not** substitute other devices if the tow bar pin and clip are lost.
8. **DEALER OR INSTALLER: BE CERTAIN THE USER RECEIVES THE INSTRUCTION SHEET.**



Strong As An Ox™

Tools Required

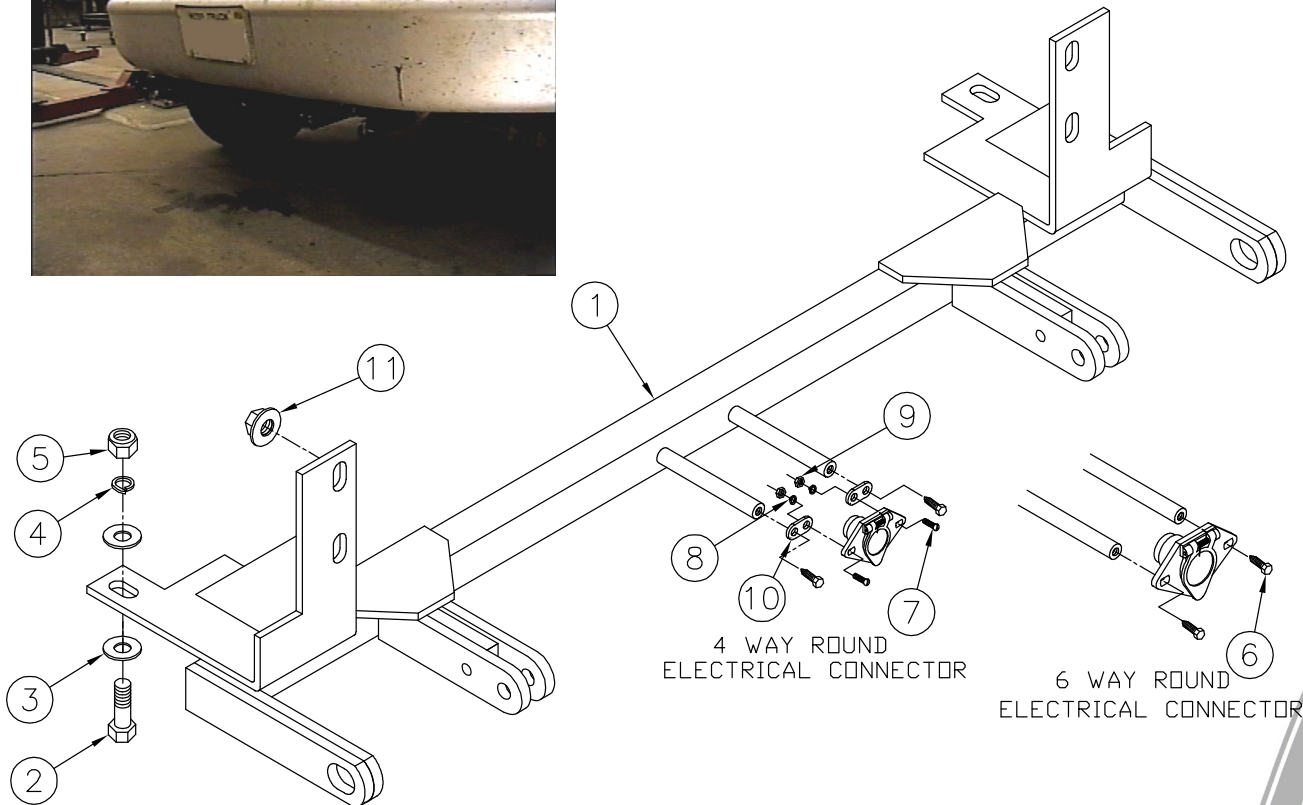
11/16" Socket
5/8" Socket

Loctite
Tape Measure

13MM Socket
21MM Socket

Parts List

Ref. No.	Qty.	Part No.	Description
1	1	61-5827	Weldment, Base Plate, BX2164
2	2	201-0416	7/16-14 x 1 1/2 Bolt, Grd. 5, ZP
3	4	203-0004	7/16 Flat Washer, ZP
4	2	203-0011	7/16 Lock Washer, ZP
5	2	202-0004	7/16-14 Hex Nut, ZP
6	2	201-0979	#12-14 x 1" Self Drilling Screw, ZP
7	2	201-0192	#10-32 x 1/2 Slot, Rd. Hd. Screw
8	2	203-0054	#10 Lock Washer
9	2	202-0047	#10-32 Hex Nut
10	2	101-5822	Adapter, 4 Way Connector
11	4		Existing Metric Hex Nut
	2	226-0049	Baseplate Safety Cable, 36" CL IV (Not Shown)
	4	229-0512	Quicklink, 1/2, ZP (Not Shown)



IMPORTANT: Use only genuine factory replacement parts on your Base Plate. Do not substitute homemade or nontypical parts. If a bolt is lost or in need of replacement, for your safety and the preservation of your Base Plate, be sure to use a replacement bolt of the same grade (Usually Grade 5, refer to parts list). Repair parts may be ordered through your nearest **Blue Ox** dealer or distributor.